

BUSHEY Auctions

Catalogue

Catalogue £2

Auction of Antiques, Fine Art, Collectables,
Coins, Clocks, Watches, Jewellery and Silver



Lot 250

Thursday 11th June 2026

Auction starts at 11am

Live Online Bidding

Absentee and Telephone Bids accepted

No Public Attendance on Auction Day

Viewing by Appointment

4th to 10th June

Unit 9 Shakespeare Industrial Estate, Watford. WD24 5RR

www.busheyauctions.com

**BID LIVE ONLINE FOR £3
PER AUCTION**
easyliveAuction.com

the-saleroom.com

BUSHEY Auctions

Welcome to Bushey Auctions

We hope you will have an enjoyable time bidding for the fantastic array of antiques, fine art, collectables, jewellery, silver etc from private collections. Please remember when placing your bid, the Buyers premium is 20% + VAT on top of the hammer price.

Please note that any lots purchased via online bidding portals will be subject to an additional commission charge imposed on the hammer price in addition to our basic Buyers Premium.

Please see the individual sites for rates of commission.

Bushey Auctions hold monthly auctions and valuation days; please see the back of the catalogue for forthcoming dates. We are happy to make personal appointments to view items for submission into future sales. We also offer probate and insurance valuations. Our team is always available to help, please don't hesitate to ask any of the team if you need assistance. The information below will help you enjoy the event; it sets out how the auction works.

CONDITIONS OF SALE

VIEWING (BY APPOINTMENT ONLY for 7 days before auction date)

The catalogue contains a Lot no, Description and Estimate for each lot. The description is for guidance only and as some items are of an age or nature that means they may not be in perfect condition, we advise you to examine the lots yourself before the auction starts. Please take care when handling items, all breakages and damage will be charged for. Viewing times are shown on the front of the catalogue. All items are offered for sale as viewed and are sold as seen. The auctioneer does not take responsibility for authenticity, origin or estimated price. All items are sold without any warranty or claim as to its suitability or fitness for its apparent purpose so as a prospective Buyer, you should use your judgement. The wording A/F within the description is an indication that the lot may not be in good condition. All electrical items are sold on the express condition that the winner ensures they are examined by a competent electrician before connecting them to any source of electricity.

Condition Reports will be supplied until 4 p.m. the day before auction day.

All sales are final and no refunds are given.

RESERVE PRICES

Some items have a reserve price. Where necessary, the Auctioneer will protect the reserve on an item and use his discretion up to 10%. If this price is not reached, the Auctioneer will record the item as unsold and move on to the next item.

THE BUYER

The highest bidder as determined by the Auctioneer is the Buyer. The Auctioneer has absolute discretion to settle any dispute that may arise and to refuse bids or to advance the bidding as seen fit. His decision is final. These terms and conditions also apply to after-sale bids, timed auction bids and private treaty sales.

In cases of dispute these Conditions of Sale are governed by UK jurisdiction under English Law.

THE BUYER'S PREMIUM

This is the commission paid to the auctioneer by the Buyer over and above the highest bid value (often referred to as the Hammer Price) of each item. **OUR BUYER'S PREMIUM IS 20% + VAT (total 24%). So if you are the highest bidder on an item with a £100 bid, the total cost to you is £124. Please take this into account when bidding.**

Please see the individual sites for rates of commission.

Please note that any lots purchased via online bidding portals will be subject to an additional commission charge imposed on the hammer price in addition to our basic Buyers Premium. Certain works by living artists or artists deceased within the last 70 years will incur an Artist's Resale Right royalty charge when sold with a hammer price of £1000 or more.

ONLINE BIDDING

We offer online bidding services via www.easyliveauction.com and www.the-saleroom.com

Please note that any lots purchased via online bidding portals will be subject to an additional commission charge imposed on the hammer price in addition to our basic Buyers Premium.

Please see the individual sites for rates of commission.

Payment must be made within 48 hours, by debit card or bank transfer, collection is by appointment only from our Watford showroom. Unless by prior arrangement, storage charges of £5 per item per day will be incurred thereafter. If payment is not received a week after the auction date, the bidder's account will be blocked on all internet bidding sites (the comments are available to all auctioneers).

PAYMENT

You are welcome to pay by cash, cheque, electronic bank transfer or debit card. Credit cards will only be accepted up to the value of £500. A 3% surcharge will apply to Business debit/credit cards and International debit/credit cards. We reserve the right to hold items paid for by cheque until the cheque has cleared.

Please note, once the Auctioneer has determined yours to be the winning bid, a legal contract is created and you are responsible for and obliged to pay for the item(s). If full payment is not received within two weeks after the auction date Bushey Auctions reserve the right to hand the bidder's account over to our debt collection agency. In the event your account is passed for recovery please be advised you will be responsible for all additional costs which will include but not limited to debt recovery costs, legal costs, interest and storage charges. This will affect your bidder status at Bushey Auctions and any other auction houses as well as internet bidding sites and should the matter proceed through the courts this may affect your credit status. Bushey Auctions reserve the right to cancel the sale and re-sell the item(s) won and can also proceed against the Buyer for breach of contract. Any deposits or part payments shall be forfeited and the defaulter shall make good any loss arising from the resale, together with the charges and expenses in respect to both sales. So please only bid up to the amount you are prepared to pay and make sure you allow for the Buyer's Premium and VAT

Items that have been paid for not collected 3 months after the auction date will be sold by Bushey Auctions, the proceeds to defray storage charges.

IF YOU CAN'T MAKE THE AUCTION, WE CAN BID FOR YOU

If you would like to bid for an item, we are happy to bid on your behalf. Please request a form by email or complete the Absentee/Commission bidding form found on our website stating the maximum you are prepared to bid (minimum bid £20). You can also bid over the telephone for lots estimated over £50. The form to book a telephone line is also found on our website.

All forms must be received by 4 p.m. the day before auction day. Please note that acceptance is not guaranteed. We require debit or credit card details for all absentee/commission/telephone bids as security for your bid and may require a deposit of 50% of your maximum bid. We will then bid for you up to your maximum, attempting to secure the item at the lowest required to beat all other bids. We will contact you if you are the winning bidder for the lot(s) and will arrange payment and collection with you. Payment must be made within 48 hours and we reserve the right to charge the card given in full payment including all fees. Unless by prior arrangement, storage charges of £5 per item per day will be incurred thereafter.

Lot No.	Description	Estimate
Furniture		
1	An original Globe Wernicke five section rectangular oak glazed bookcase with top cover and base plinth, 181.5 x 86.5 x 32cm	£200-£300
2	A French gilt side table, the cabriole legs carved with flowers, leaves and detachable white marble top, 78.5 x 79 x 59.5cm	£80-£120
3	19th century Chinese hardwood stand, pierced and carved with stylised leaves and flowers and inset marble top, 91 x 50cm	£200-£300
4	19th century Chinese hardwood plant stand with inset marble top and four tapering rectangular legs, 48 x 41cm	£150-£200
5	Georgian mahogany drop flap oval gate leg dining table on four pad feet, 71 x 141 x 160cm	£220-£320
6	An 18th century mahogany pad foot oval drop leaf table circa 1760, 73 x 109 x 115cm	£100-£150
7	Victorian walnut, mahogany and birds eye maple Davenport circa 1870, to include original purchase invoice receipt, 89.5 x 56 x 55cm	£120-£180
8	A rectangular mahogany four tier whatnot with single drawer, all on four brass castors, 127 x 49.5 x 41cm	£100-£150
9	An Edwardian mahogany three tier corner whatnot with single cupboard to base, 140 x 72cm	£100-£150
10	An early 20th century mahogany four tier corner whatnot with barley twist supports, 125 x 57cm	£30-£50
11	An early 20th century three colour wood corner unit on three ball and claw feet, 93.5 x 79 x 47cm	£80-£120
12	A French Kingswood rectangular side table with two drawers on cabriole legs, 74 x 38 x 28cm	£60-£90
13	An early 20th century shaped square mahogany two tier side table, 70 x 46 x 45cm	£40-£60
14	An early 20th century rectangular mahogany side table with single drawer on four cabriole legs, 70 x 62 x 38.5cm	£40-£60
15	An Edwardian inlaid mahogany envelope games table with single drawer all on tapering cylindrical supports, 72.5 x 55.5 x 55.5cm closed	£100-£150
16	An early 20th century rectangular mahogany tallboy chest of drawers, 91.5 x 51.5 x 38cm	£80-£120

Lot No.	Description	Estimate
17	A mahogany ladies desk with tooled leather top, single drawer, gilt handles and fittings on cabriole legs, 72 x 74 x 44cm	£70-£100
18	A circular mahogany plant stand on raised circular base, 61 x 30.5cm	£30-£50
19	A 20th century circular three tier mahogany rotating bookcase, 162 x 56cm	£80-£120
20	An Edwardian rectangular Canterbury of customary form with single drawer and brass handles on original castors, 53 x 56 x 35.5cm	£30-£50
21	An early 20th century square mahogany table top Canterbury on a square mahogany stand, Canterbury 28.5 x 33.5 x 33.5cm stand 39 x 30 x 29cm	£40-£60
22	A Victorian rectangular mahogany apprentice piece dresser with three drawers, 50 x 40 x 20cm	£60-£90
23	An early 20th century rectangular table top set of drawers with turned wooden handles, 41 x 40.5 x 30.5cm A/F	£50-£80
24	A rectangular mahogany table top set of drawers, 28 x 45 x 14.5cm A/F	£30-£50
25	A rectangular pine blanket box with hinged cover, 52.5 x 91 x 46cm	£70-£100
26	An early 20th century mahogany Dumb Valet, 122.5 x 49 x 44cm	£40-£60
27	A pair of Edwardian mahogany and satinwood inlaid upholstered revolving tub chairs with scroll pierced backs on four tapering rectangular feet with original castors	£200-£300
28	An Edwardian upholstered armchair on four tapering supports	£80-£120
29	A set of four mahogany dining chairs with upholstered seats	£60-£90
30	An early 20th century bentwood and bergère rocking chair with matching footstool	£60-£90
31	A rectangular gilded wooden wall mirror, 99 x 79 x 8cm	£80-£120
32	A Persian silk and wool carpet, cream ground with repeating motifs, flowers and scrolls within a red and brown repeating motif border, 165 x 105.5cm	£80-£120
33	A continental porcelain bodge table lamp with figural stems on raised shaped circular base, 58cm (h)	£200-£300
34	Two ebonised wooden lampstands decorated in the chinoiserie style, 55.5cm (h)	£80-£120

Lot No.	Description	Estimate
Fine Art		
35	Patrick Hughes framed and glazed Artist Proof titled Registered Rainbow, signed bottom right, 65.5 x 56cm	£200-£300
36	Sally Beaumont framed and glazed monochromatic limited edition etching titled Thro The Palace 16/45, signed bottom right, 34 x 41cm	£30-£50
37	Temistocle Lamesi framed and glazed watercolour titled A Joyous Dance, signed bottom right, 44 x 32.5cm	£30-£50
38	Alberto Collina framed and glazed watercolour titled A Happy Tune, signed bottom left (below the mount Near Tivola July 5 1918) 57 x 37cm	£30-£50
39	A. Oppenheimer framed and glazed watercolour of a Swiss mountain village scene, signed bottom right, 29x 38.5cm	£50-£80
40	A. Oppenheimer framed and glazed watercolour of an Italian coastal village, signed bottom left, 35 x 44.5cm	£50-£80
41	Richard Cheales framed watercolour of sailing boats, signed bottom left, 52.5 x 73cm	£50-£80
42	Three Alfred Macdonald pen and ink drawings of Bushey scenes to include Wheatsheaf Inn, Entrance to Red Lion Yard and High St opposite Sedgwicks, each 20 x 25cm	£50-£80
43	Attributed to Marc Chagall pen and ink drawing of figures by a house, 23.5 x 15.5	£1200-£1800



Lot 43

Lot No.	Description	Estimate
44	Rupert Aker framed and glazed mixed media landscape, details to verso, 19.5 x 19.5cm	£40-£60
45	David Allen framed and glazed pastel titled Summer Sun Staithos, signed bottom left, 38 x 50cm	£200-£300
46	John Lowrie Morrison (Jolomo) framed oil on canvas titled A Gigna Croft, signed bottom right, original labels to verso, 74.5 x 74.5cm, ARR applies	£2000-£3000
47	M J Rendell framed oil on canvas titled The Haymakers, signed bottom left, 29 x 39.5cm	£100-£150
48	An early 19th century framed portrait of a gentleman, 61 x 43cm	£50-£80
49	Pearl Pols framed oil and gouache on panel still life of flowers, signed bottom right, 68 x 60.5cm	£50-£80
50	A framed oil on canvas of figures in a landscape, indistinctly signed bottom left, 37.5 x 57.5cm	£50-£80
51	A. Compton oil on canvas of a fisherman by a stream, signed bottom left, 56 x 81.5cm	£30-£50
52	N. Hickman oil on canvas of a fisherman in the Lake District, signed bottom right, 45 x 76cm	£30-£50
53	J. M. Tucker early 20th century oil on canvas of a lake and mountains, signed bottom left, 40 x 61cm	£30-£50

Porcelain

54	Royal Worcester Manor House pattern dinner, tea and coffee service to include plates, bowls, half moon plates, teapot, milk jug and sugar bowl (132)	£250-£350
55	Royal Worcester Golden Anniversary pattern dinner, tea and coffee service to include, plates, bowls, cups, saucers, a teapot, cream jug, sugar bowl, oval meat platters, sauce boat and stand (121)	£180-£280
56	Rosenthal classic Pompadour pattern dinner and coffee service to include plates, bowls, serving dishes, platters, a coffee pot, cups, saucers and a sauce boat, marks to the bases (87)	£500-£800
57	Royal Crown Derby Cherbourg pattern dinner service to include plates, bowls, vegetable dishes with covers, a sauce boat and a meat platter, marks to the bases (51)	£200-£300
58	Royal Crown Derby Vine pattern to include cups, saucers and plates, marks to the bases (46)	£100-£150

Lot No.	Description	Estimate
59	Royal Crown Derby Asian Rose pattern plates of varying sizes with gilded border, marks to the bases (46)	£100-£150
60	Royal Crown Derby Asian Rose pattern plates of varying sizes with gilded gadrooned border, marks to the bases (16)	£50-£80
61	A quantity of Royal Crown Derby Imari pattern plates of varying sizes, marks to the bases (20)	£100-£150
62	Royal Crown Derby Majestic pattern dinner, tea and coffee service to include plates, a covered tureen and coffee pots, marks to the bases (70)	£200-£300
63	Royal Worcester Windsor pattern dinner, tea and coffee service to include plates, coffee pot, teapot, cups, saucers and platters, marks to the bases (34)	£120-£180
64	Coalport Revelry pattern dinner and tea service to include plates, bowls, platters, sauce boats and stand, cups and saucers, marks to the bases (87)	£100-£150
65	Coalport Ming Rose pattern dinner and tea set to include plates, cups and saucers, marks to the bases (62)	£100-£150
66	1960s/1970s Galerie Lafayette dinner service to include plates, bowls, a teapot and serving dishes, marks to the bases (57)	£40-£60
67	Aynsley teaset for twelve place settings to include a teapot, sugar bowl, milk jug, cake plates, plates, cups and saucers (41)	£50-£80
68	Royal Albert Old English Rose pattern teaset to include cups, saucers and plates (28)	£50-£80
69	Royal Albert teaset to include cups and saucers, marks to the bases (35)	£40-£60
70	Coalport Victorian teaset to include cups, saucers, plates and a milk jug, marks to the bases (28)	£40-£60
71	Minton Winchester pattern teaset to include cups, saucers and plates, marks to the bases (30)	£30-£50
72	Belleek six place setting teaset to include a teapot, milk jug, sugar bowl, bonbon dish, cake plate, cups, saucers and plates, marks to the bases (23)	£120-£180
73	A quantity of Belleek to include two vases, a biscuit barrel and cover and a shell shaped dish, marks to the bases (4)	£40-£60
74	Aynsley Hereford pattern coffee set to include a coffee pot, cups, saucers, sugar bowl, cream jug, marks to the bases (15)	£40-£60
75	A quantity of Dresden hand painted plates and cups, marks to the bases (48)	£100-£150

Lot No.	Description	Estimate
76	Bloor Derby Imari pattern baluster vase with double scroll handles on raised square base, A/F, 29cm (h)	£40-£60
77	A striped hand decorated two handled vase and cover in the manner of Chelsea/Derby from an 18th century design, the sides with oval cartouches one of a landscape the other of a resting shepherd, A/F, 26cm (h)	£40-£60
78	An English 19th century porcelain tazza with pull off cover decorated with flowers and leaves, 17 x 20.5cm	£30-£50
79	Two 19th century ovoid vases decorated with hand painted exotic birds, tallest 23.5cm (h)	£40-£60
80	Victorian black ceramic baluster vase with two cast metal side handles, on square base decorated with figurines in classical dress, 35.5cm (h)	£70-£100
81	Minton Tercentenary William Shakespeare 1564-1864 character jug, 28cm (h)	£50-£80
82	A pair of Limoges porcelain candlesticks on raised octagonal bases, marks to the bases, 23.5cm (h)	£40-£60
83	A Delft blue and white rectangular butter dish and cover, marks to the base, 11 x 16.5 x 12cm	£30-£50
84	A Meissen seated Pierrot figurine, marks to the base, 15.5 x 19 x 10cm	£400-£600
85	An 18th century Derby hard paste porcelain figurine of Andromache mourning over the ashes of Hector, modelled by Pierre Stephan circa 1785, A/F 22cm (h)	£40-£60
86	A 19th century Paris porcelain nightlight, La Belle Jardinière by Jacob Petit, 36.5cm (h) A/F	£60-£90
87	A pair of continental figurines of a gentleman and lady in 18th century attire, tallest 19.5cm (h) A/F	£60-£90
88	A quantity of continental porcelain figurines of ladies, a gentleman and putti, tallest 20cm (h) (6)	£30-£50
89	A Royal Dux figurine of a nude bather, marks to the base, 16 x 21cm	£100-£150
90	An Art Deco Czechoslovakian ceramic wall plaque mask of a lady, marks to verso, 18 x 14cm, A/F	£100-£150
91	Bosons Comical Annie figurine wall plaque, marks to verso, 25.5 x 11cm	£200-£300
92	A pair of porcelain and gilt metal continental figurines on raised circular base, 24cm (h)	£60-£90

Lot No.	Description	Estimate
Glass		
93	A continental frosted glass centrepiece in the form of a stylised flower, 40cm (d)	£60-£90
94	Waterford black and clear glass ovoid vase, signed to the base, 30.5cm (h)	£40-£60
95	A Victorian glass vase with gilt decorations over a frosted body on raised circular base, 25.5cm (h)	£30-£50
96	Two mid 20th century Italian Empoli blue glass bonbon dishes and covers, tallest 31cm (h)	£50-£80
97	A quantity of Murano faceted red, green and amber Sommerso glass block vases and dishes, tallest 25cm (h) (5)	£200-£300
98	A pair of pink rectangular glass ashtrays overlaid with white metal stamped 925, 3 x 11 x 7.5cm	£40-£60
99	A mid 20th century ovoid green glass vase, 23.5cm (h)	£40-£60
100	A set of six multi coloured hock glasses on raised circular spreading bases	£100-£150
101	A set of eight blue crystal wine glasses on raised circular spreading bases	£40-£60
102	A quantity of Victorian and Edwardian toasting and cordial glasses (13)	£70-£100
103	An Art Nouveau two handled glass vase decorated with applied bronze leaves, fruit and branches, 16 x 20cm	£40-£60
104	A quantity of continental glass to include a tray, covered boxes, glasses and an Art Deco perfume bottle with drop stopper tallest 18cm (h) tray 33 x 24cm (8)	£100-£150
105	Aspreys glass decanter of baluster form with hallmarked silver collar and drop stopper, London 1997 and a cut glass dressing table bottle with hallmarked silver collar and hinged cover, tallest 50cm (h)	£70-£100
106	Simon Moore Art Glass vase, tapering cylindrical, blue to green glass, abstract pattern band to the centre, signed to the base, 29.5cm (h)	£80-£120
107	Whitefriars tangerine vase, tapering cylindrical with abstract decoration to the sides, 22cm (h)	£60-£90
108	A continental ruby glass vase decorated with gilding and hand painted flowers on six stylised clear glass feet	£30-£50
109	A quantity of glass to include perfume bottles of various size, shape and style, a dressing table jar and a paperweight (12)	£70-£100

Lot No.	Description	Estimate
110	Lalique Flacon Collection eau de parfum limited edition 2015 Plume in sealed crystal stopper parfum bottle, signed to the base, to include COA A045 and original packaging	£100-£150
111	Lalique Flacon Collection eau de parfum limited edition 2016 Anemone in sealed frosted crystal parfum bottle, signed to the base, to include COA A189 and original packaging	£100-£150
112	Lalique Flacon Collection eau de parfum limited edition 2017 Bacchantes in sealed crystal stopper parfum bottle, signed to the base, to include COA 0172 and original packaging	£100-£150
113	Lalique Flacon Collection eau de parfum limited edition 2018 Seduction in sealed crystal stopper parfum bottle, signed to the base, to include COA 0301 and original packaging	£100-£150

Oreintal Porcelain & Collectables

114	A Chinese blue and white charger, six character marks to the base, 37cm (h)	£100-£150
115	Two Chinese eggshell bowls decorated with dragons, flowers, leaves and birds, a. 18cm (d) b. 11 cm (d)	£80-£120
116	An 18th century Chinese cup and saucer with the Chantilly backstamp	£60-£90
117	An 18th century Chinese ginger jar and cover, the ovoid body decorated with flowers and stylised leaves, 25.5cm (h) A/F	£40-£60
118	A Chinese blue and white baluster vase with two stylised lion figural side handles, decorated with stylised flower, leaves and scrolls, 60cm (h)	£50-£80
119	A pair of oriental blue and white ovoid vases decorated with landscapes, 53cm (h)	£80-£120
120	A pair of Chinese cloisonné moon flasks decorated with dragons to the sides and beasts of burden side handles, marks to the bases, 38cm (h)	£220-£320
121	A pair of Chinese cloisonné ewers with pull off covers decorated with birds, scroll motifs and stylised animal handles, 31.5cm (h)	£180-£280
122	A Chinese cloisonné and copper incense burner decorated with a dragon mask and beast shaped side handles, the pull off cover with beast of burden finial, 49cm (h)	£180-£280
123	A Chinese cloisonné censer decorated with floral motifs and applied elephant mask side handles, 13.5 x 23.5cm	£80-£120

Lot No.	Description	Estimate
124	A Chinese cloisonné ovoid vase decorated with birds, flowers and leaves, 25cm (h)	£60-£90
125	A Chinese cloisonné baluster vase decorated with flowers, butterflies and birds, 26cm (h)	£50-£80
126	A Chinese circular cloisonné cricket cage with applied miniature figurines of animals and a suspensory hook, marks to the base 14.5 x 9cm	£40-£60
127	An oriental cloisonné match box holder decorated with a stylised dragon, 12.5 x 12cm	£30-£50
128	A Chinese cloisonné and white metal calligraphy brush, 60cm (l)	£40-£60
129	A Chinese cloisonné and white metal figurine of Guan Yin on a stylised cloisonné detachable base, 88cm (h)	£220-£320
130	An oriental cloisonné figural group of four herons mounted on a shaped square leaf base, 22 x 23 x 23cm	£150-£200
131	A Chinese rectangular ebonised tea caddy decorated with dragons chasing a flaming pearl, the hinged cover opening to reveal a lead lined interior, 16.5 x 28.5 x 20.5cm	£180-£280
132	An oriental rectangular wooden smokers container with applied metal symbols, A/F, 12.5 x 23 x 15.5cm	£80-£120
133	A Japanese rectangular box, a hexagonal tea caddy with pull off cover and a rectangular enamel dressing table pin tray	£60-£90
134	A quantity of Indian artefacts to include a canister, two white metal bangles and a tortoiseshell napkin ring (4)	£50-£80
135	Three Chinese snuff bottles to include two reverse painted decorated with figures in a landscape and a hand carved erotic snuff bottle, tallest 6.5cm (h)	£100-£150
136	Two Chinese bronze figurines of Tang horses, tallest 28.5cm (h)	£600-£900
137	A jadeite candlestick on raised stepped square base 19.5cm (h)	£50-£80
138	A quantity of jade and hardstone to include a bowl and stand, a model of a bird and a vase and cover, tallest 12cm (h) (3)	£50-£80
139	A Chinese Hongshan culture jade pig dragon pendant (Zhulong), from Neolithic northeastern China characterized by the coiled embryo like form and mythical beast head, 8 x 5.5cm	£30-£50

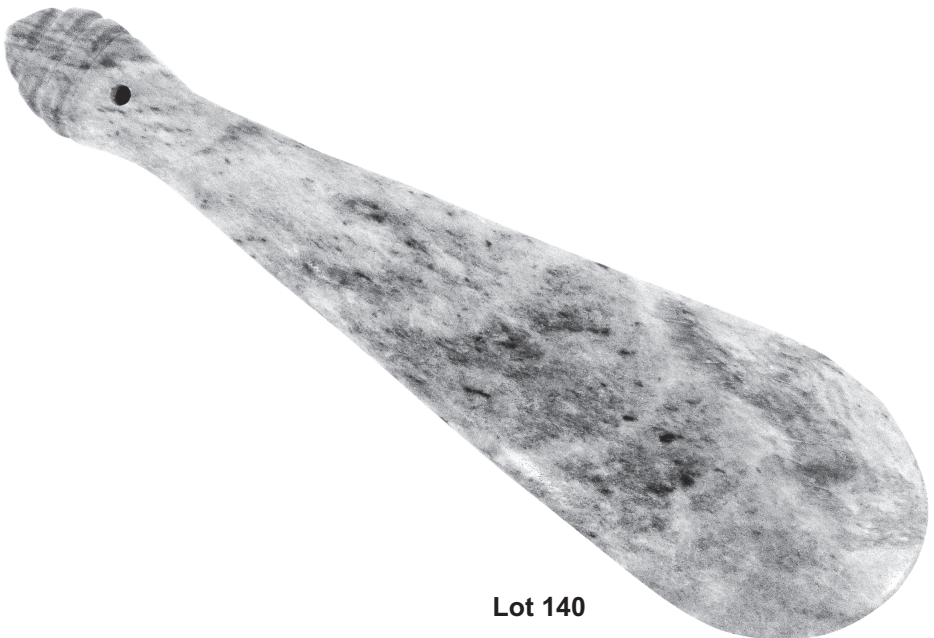
Lot No.

Description

Estimate

Single Owner Collection of Māori Jade

- | | | |
|-----|--|------------|
| 140 | Māori Mere pounamu hand club, circa 18th/19th century, New Zealand south island, made from kawakawa pounamu, of typical spatulate form with grooved butt and a single eyelet, 25 x 7cm | £700-£1000 |
| 141 | Māori Hei Tiki pendant carved from pounamu nephrite jade, historically worn to represent ancestors, fertility or the first human created by Tane, 8.5x 6cm | £60-£90 |
| 142 | Māori Manaia pendant carved from pounamu nephrite jade, worn to represent the guardian between the spirit and earthly realms, 9.5 x 5.5cm | £60-£90 |
| 143 | Māori Wheku pendant carved from pounamu nephrite jade, worn for protection and to connect with heritage, 8.3 x 6.5cm | £60-£90 |
| 144 | Māori Wheku pounamu nephrite jade heart shaped pendant, worn for protection and to connect with heritage, 5 x 5cm | £30-£50 |
| 145 | Māori Koru pounamu nephrite jade pendant, the spiral represents new beginnings, life, hope and personal growth, 9.5 x 5.2cm | £30-£50 |



Lot 140

Lot No.	Description	Estimate
146	Māori Hei Tiki pendant carved from pounamu nephrite jade pendant, historically worn to represent ancestors, fertility or the first human created by Tane, 8 x 5.2cm	£40-£60
147	Māori Koru spiral pounamu nephrite jade pendant, the spiral represents new beginnings, life, hope and personal growth, 6cm (d)	£30-£50
148	Maori Triple Koru spiral pounamu nephrite jade pendant, the spiral represents coming together of unity and creation, 6cm (d)	£40-£60
149	Māori Pikorua Wuji black jade pendant, representing strength, authority, control and a symbol of power, 7.5 x 4.5cm	£30-£50
150	Maori Toki pounamu nephrite jade pendant, the spiral represents the joining of lives together, bonding in friendship, 9 x 2.2cm	£40-£60
151	Māori Hei Toki pounamu nephrite jade pendant, traditionally worn by chiefs and elders symbolizing focus, leadership and purposeful action, 7.5 x 4.2cm	£40-£60
152	Māori Double Koru Toki pounamu nephrite jade pendant, symbolises new beginnings, growth, harmony and peace, 7.5 x 3cm	£30-£50
153	Māori Hei Toki pounamu nephrite jade pendant, traditionally worn by chiefs and elders symbolizing focus, leadership and purposeful action, 7.5 x 4.2cm	£40-£60
154	A quantity of Māori Toki pounamu nephrite jade pendants of varying size and shape, largest 10cm (l) (8)	£120-£180
155	A quantity of Māori Toki pounamu nephrite jade pendants of varying size and shape, largest 10cm (l) (8)	£120-£180
156	A quantity of Māori pounamu nephrite jade pendants to include Wera, Niho, Roimata, of varying size and shape, largest 8cm (l) (7)	£100-£150
157	A quantity of Māori pounamu nephrite jade pendants of varying colour, size and shape, largest 8cm (l) (10)	£100-£150
158	A quantity of Māori pounamu nephrite jade pendants to include Hei Matau, Hei Tiki, Koru and a Bi disc (Heshibi) of varying colour, size and shape, largest 7.5cm (l) (6)	£100-£150
159	A quantity of Māori pounamu nephrite jade pendants of varying size and shape, largest 10cm (l) (25)	£120-£180

Lot No.	Description	Estimate
160	A quantity of Māori pounamu nephrite jade pendants of varying size and shape, a nephrite jade stone and an oval disc, largest 7cm (l) (14)	£100-£150
161	A quantity of Māori pounamu nephrite jade pendants of varying size and shape, largest 7cm (l) (17)	£100-£150

Collectables

162	Alec Tiranti Ltd Scopus sculptors modelling stand with rotating wooden top on tripod base, 103cm (h)	£80-£120
163	A pair of cast bronze figurines of long dogs with curling tails and raised paws on raised oval bases, each 46 x 59 x 24cm	£200-£300
164	A bronzed cast Horse and Foal figural group, indistinctly signed to the base, 30.5 x 34 x 26cm	£300-£500
165	Rizes bronze figurine of a gymnast, signed to the base, 44cm (h)	£150-£200
166	A wirework figurine of a man on a scooter mounted on a wooden plinth, 44 x 29 x 14cm	£30-£50
167	H Keck 1876-1941 bronze figurine of a young man carrying a basket mounted on a raised circular base, signed to the base, 19cm (h)	£80-£120
168	A cast bronze figurine of a huntsman holding a fox and his dog jumping up by his feet, 13.5cm (h)	£60-£90



Lot 163

Lot No.	Description	Estimate
169	A brass trophy shaped plant holder with two ring side handles all on square plinth, 33.5cm (h)	£30-£50
170	An early 20th century brass car horn	£40-£60
171	A pair of gilded metal floral candelabra, 69.5cm (h)	£100-£150
172	A French gilt metal, marble and champleve tazza and a matching pair of candelabra garnitures, inset with classical medallions and coloured marble geometric forms, tazza 21 x 31cm candelabra 46.5cm (h)	£300-£500
173	A pair of late 19th century brass chambersticks of customary form with conical snuffers and detachable wick trimmers and a pair of French bronze curtain tiebacks	£50-£80
174	An Art Nouveau brass shaped oval jardinière with two scroll handles on four scroll supports and original lead lining, 14 x 41.5 x 21cm	£80-£120
175	Four gilded metal photograph frames of various shape and size, tallest 28cm (h)	£40-£60
176	Artisan House sculpture titled Magical 210945 wall hanging to include COA, 70 x 115cm	£100-£150
177	Two continental jewellery caskets, a. 6 x 13 x 10cm b. 5x 13 x 12cm	£50-£80
178	Four papier mache boxes decorated with landscapes, animals and figures, largest 5 x 16 x 7.5cm	£50-£80
179	Grand Tour trinket box and a Bidriware pill box, 5 x 6 x 6cm and 2 x 5.5 x 3.5cm	£30-£50
180	Bilston and Battersea enamel boxes depicting figures fishing and shooting and a Cinnabar lacquer circular oriental box and cover (4)	£30-£50
181	A walnut and inlaid marquetry rectangular jewellery casket, 14 x 30.5 x 23cm	£30-£50
182	A 19th century mahogany rectangular casket with inlaid Mother of Pearl cartouche to include a secret drawer, 16.5 x 30.5 x 22.5cm, A/F	£50-£80
183	Victorian rectangular mahogany brass bound writing slope with brass cartouche, 16.5 x 40 x 23.5cm	£60-£90
184	A pair of mahogany Georgian knife boxes, the hinged covers opening to reveal fitted interiors and hinged side handles, 36.5 x 23 x 26cm	£60-£90

Lot No.	Description	Estimate
185	A pair of mahogany Georgian knife boxes, the hinged covers opening to reveal fitted interiors, 38 x 22.5 x 28cm	£60-£90
186	A pair of framed and glazed white bisque plaques of gentlemens profiles, frames 26.5 x 26cm, plaques 8cm (d)	£30-£50
187	Five framed ceramic pot lids decorated with figures and buildings	£70-£100
188	A framed and glazed sampler for Emma Parks, May 19 1826 aged 9, frame 42 x 40.5cm	£60-£90
189	A framed and glazed sampler of customary form by Lavinia Mango aged 14, dated 1844, frame 51.5 x 42cm	£40-£60
190	Festival of Britain original polychromatic poster for Croxley Green June 17th to 23rd 1951, 75 x 50cm	£40-£60
191	A quantity of GB and foreign phone cards in sixteen albums and loose cards	£150-£200
192	Columbia mechanical windup portable gramophone, 6.5 x 29.5 x 41cm closed	£40-£60
193	An 18th/19th century Stradivarius style violin in fitted case	£70-£100
194	Keech ukelele banjo circa 1930 A/F	£30-£50
195	A pair of Ross 8 x 30 Steptron binoculars serial no. 43885 in fitted leather case and original packaging	£50-£80
196	A pair of early 20th century Carl Zeiss Jena 8 x 30 binoculars in fitted leather case	£50-£80
197	Sheaffer fountain pen with 14ct gold nib in original case	£30-£50
198	A pair of 9ct gold and tortoiseshell lorgnettes	£200-£300
199	A pair of gold plated lorgnettes and a gold plated magnifying glass (2)	£40-£60
200	Romeo Y Julieta 25 Mille Fleurs in sealed original packaging	£350-£500
201	A cast metal silvered table lighter in the form of a monkey seated on a set of books holding a scull, A/F, 16cm (h)	£30-£50
202	Three Inner London Teachers Association medallions to include one 9ct gold and enamel medallion and two gold plated and enamel medallions	£50-£80
203	A polished quartz agate found in Kenya, 12.5 x 16 x 14cm	£60-£90
204	A quantity of angling equipment to include reels, rods, accessories, a carrying box with a selection of floats, a net and a folding chair	£50-£80
205	A quantity of angling equipment to include reels, rods, nets accessories, a carrying box, a selection of floats and a stool	£50-£80

Lot No.	Description	Estimate
206	Disney Toy Story Intergalactic Buzz Lightyear Ultimate Talking Action Figurine in original packaging	£100-£150
207	A playworn Mamod steam engine with accessories in original packaging	£30-£50
208	A quantity of Corgi diecast to include a 1940s DC Comics Batmobile, cars, buses, trucks and vans all in original packaging (16)	£30-£50
209	A quantity of diecast model aeroplanes to include Meccano No 63g Boeing Flying Fortress, Dinky Toys 60w Flying Boat Clipper III, 62t Armstrong Whitworth Whitley Bomber, 62T Armstrong Whitworth Whitley Bomber with Shadow Shading, 62w Imperial Airways Frobisher Class Liner and a Corgi WEWII legends Fairey Swordfish MkII all in original packaging (6)	£60-£90
210	A quantity of diecast to include Dinky Supertoys 973 Goods Yard Crane, Meccano Dinky Toys No 48 Petrol Station, Tekno 1:50 transporter and Meccano Ships of The British Navy, all in original packaging (4)	£40-£60
211	A quantity of vintage Dinky diecast to include cars, trucks, buses, trams, caravans, motorbike, sidecars and police boxes (40)	£60-£90
212	A quantity of playworn Dinky diecast to include James Bond Aston Martin DB5, Thunderbird 2, Eagle Freighter, USS Enterprise, Junkers JU87B, Matchbox Starfish and Dinky Rover 3500 in original packaging (7)	£50-£80
213	A quantity of Matchbox diecast playworn cars, fire engines, buses and trains (17)	£30-£50
214	A quantity of diecast to include 555 Fire Engine with extending ladder, 571 Coles Mobile Crane, 564 Elevator Loader, 14c Coventry Climax Fork Lift Truck A/F and Dinky Supertoys 561 Blaw Knox Bulldozer, five Dinky trucks Austin and Dodge, Lesney Models of YesterYear No.7 The Allchin7-N.H.P Traction Engine, No 8 The Bullnose Morris Cowley 1926, some in original packaging	£60-£90
215	A quantity of diecast and tinplate cars and buses to include Meccano Two Seater Sports Car, Schucco Brevette Racing Car, Vanguard Triumph Herald, London Transport Trolley Bus and Triang Minic Omnibus (5)	£60-£90

Lot No.	Description	Estimate
216	A quantity of GB pre 1947 silver half crowns, approx. total weight 485g	£250-£350
217	A quantity of GB pre 1947 silver coins to include florins, two shillings, shillings and sixpences, approx. total weight 972g	£500-£800
218	A quantity of pre 1920 silver coins approx. total weight 180g and a quantity of pre 1947 silver coins approx. total weight 59g	£200-£300
219	A quantity of pre 1947 GB coins to include half crowns, florins, shilling, sixpences and 3d, approx. total weight 356g	£200-£300
220	A quantity of pre 1947 GB silver coins approx. total weight 232g	£120-£180
221	Four Britannia silver £2 coins in original packaging, HMS Victory silver proof coin in original packaging and a Mexican 1968 Twenty-Five Pesos silver coin, approx. total weight of silver 185g	£200-£300
222	A quantity of GB coins to include crowns, half crowns, 50 pence, shillings and pennies	£40-£60
223	1797 George III cartwheel penny	£30-£50
224	A quantity of GB Royal Mint coins to include presentation £5, £2 and £1 packs, BU sets and covers	£80-£120
225	A quantity of GB and foreign coins to include proof and uncirculated	£70-£100
226	A quantity of GB and foreign bank notes to include Page £20, Sommerset £5, Page £1	£30-£50

Clocks & Watches

227	Laine of Paris 19th century gilt metal figural mantle clock, white enamel dial, Roman numerals, two train movement, to include pendulum and key, 40 x 26.5 x 11.5cm	£80-£120
228	A French 19th century gilt metal mantle clock with porcelain dial, Roman numerals, to include key and pendulum, 31 x 26 x 11cm	£120-£180
229	An architectural style Victorian black slate mantle clock, with Roman numerals, two train movement, to include pendulum, 42 x 34.5 x 15cm	£60-£90
230	A French Victorian drum head black slate mantle clock, white enamel dial and Roman numerals, two train movement, to include pendulum, 22.5 x 40 x 13cm	£80-£120

Lot No.	Description	Estimate
231	Scherer of Paris 19th century black marble rectangular mantle clock, white enamel dial with Roman numerals, two train movement, to include pendulum, 35.5 x 31 x 16cm	£40-£60
232	A 19th century brass Lantern clock in 17th century style, the outset chapter ring with Roman numerals and florally engraved centre beneath pierced floral frets and strapped bell, 27cm (h), A/F	£70-£100
233	Bayard carriage clock of customary form, white enamel dial and Roman numerals and hinged carrying handle, 15 x 8 x 6.5cm	£50-£80
234	Lecomte of Geneva 18ct gold open face pocket watch, approx. total weight 34.7g	£700-£1000
235	Waltham 9ct gold half hunter pocket watch, approx. total weight 93.0g	£1400-£2000
236	Cyma 9ct white gold and diamond ladies bracelet wristwatch, approx. total weight 18.9g	£400-£600
237	Verity 9ct yellow gold ladies wristwatch on a 9ct articulated bracelet, approx. total weight 10.2g	£200-£300
238	Accurist gentlemen's mid 20th century wristwatch on a leather strap, to include original purchase receipt	£30-£50

Objects of Vertu, Jewellery & Gold Coins

239	A quantity of costume jewellery to include necklaces, bracelets, earrings, pendants, watches and brooches	£120-£180
240	A quantity of costume jewellery to include bracelets, bangles, necklaces, brooches, earrings and cufflinks	£100-£150
241	A quantity of costume jewellery to include necklaces, earrings, bangles, bracelets and brooches	£100-£150
242	A quantity of costume jewellery to include necklaces, brooches and earrings	£50-£80
243	A quantity of silver and costume jewellery to include bracelets, necklaces, cufflinks, brooches, watches and a tie pin	£70-£100
244	A quantity of jewellery to include a Baltic Amber Butterscotch bead necklace, a gold sapphire and diamond ladies wristwatch on replacement bracelet A/F, a costume jewellery pendant necklace, a silver disc pendant and antique silver coins	£100-£150

Lot No.	Description	Estimate
245	A quantity of amber and silver jewellery to include earrings, a brooch, a necklace and a hallmarked silver pill box	£80-£120
246	Pearl and moonstone necklace	£80-£120
247	Micro mosaic flower brooch	£120-£180
248	A pair of pinchbeck and coloured stones drop earrings	£80-£120
249	An antique white metal and carved fruitwood brooch	£40-£60
250	George I shaped rectangular gold snuffbox circa 1715, the hinged cover embossed with a classical scene within a border of leaf and scrollwork, the base with a cartouche embossed with birds, trees and buildings, approx. total weight 136g, tested 18ct, 6 x 8 x 1cm	£8000-£12000
251	Louis XV rectangular gold snuffbox by Lazare Antoine Clérin of Paris circa 1754 chased with flowers, leaves and scrolls, approx. total weight 148g, tested 15ct, 5 x 7 x 3.2cm	£7000-£10000
252	A French 19th century Louis XVI style gold and enamel rectangular toothpick holder decorated to the hinged cover with fruit, flowers and leaves, approx. total weight 28g, tested 15ct, 1.5 x 7 x .8cm	£2000-£3000
253	Gold and black onyx rectangular aide-mémoire, the hinged covers decorated with courtly scenes in the chinoiserie style to include a detachable pencil, tested 18ct, 9 x 5.5 x 1 cm A/F	£200-£300
254	A mid 19th century gold and carved black onyx seal with suspensory loop in the form of a serpent, approx. total weight 11g, tested 14ct	£300-£500
255	18ct yellow gold and diamond solitaire ring, diamond approx. 2ct, approx. total weight 11.2g,	£7000-£10000
256	Platinum and diamond solitaire ring, diamond approx. 1.5ct, approx. total weight 5.7g	£1400-£2000
257	18ct white gold and pave set diamond ring, approx 1.99ct of diamonds, approx. total weight 6.4g	£1000-£1500
258	18ct white gold, diamond and emerald dress ring, approx. total weight 4.2g	£800-£1200
259	18ct white gold seven stone diamond ring, approx. total weight 4.9g	£500-£800
260	White gold and diamond solitaire diamond ring, approx. total weight 8.2g, tested 18ct	£600-£900
261	Platinum three stone diamond ring, approx. total weight 2.1g	£300-£500

Lot No.	Description	Estimate
262	18ct white gold and diamond pavé set ring, approx. total weight 8.5g	£1000-£1500
263	Platinum and diamond dress ring, approx. total weight 2.7g	£500-£800
264	Platinum and diamond dress ring, approx. total weight 2.1g	£500-£800
265	Platinum and diamond cluster ring, approx. total weight 2.0g	£200-£300
266	18ct yellow gold and diamond five stone ring, approx. total weight 3.3g	£400-£600
267	Platinum, diamond, ruby and sapphire fold over eternity ring, approx. total weight 6.6g	£500-£800
268	18ct yellow gold and cabochon amethyst Theosophy ring circa 1918, approx. total weight 5.8g	£400-£600
269	14ct white gold and diamond dress ring, approx. total weight 3.2g	£300-£500
270	14ct white gold diamond and coloured stone ring, approx. total weight 4.2g	£180-£280
271	Art Deco platinum ruby and diamond dress ring, approx. total weight 5.2g	£400-£600
272	White gold, diamond and pearl cocktail ring, approx. total weight 5.1g, tested 9ct	£300-£500
273	14ct white gold, emerald and diamond ring, approx. total weight 4.6g	£280-£380
274	18ct gold three stone diamond and emerald dress ring, approx. total weight 2.2g	£250-£350
275	Gold three stone diamond cocktail ring, approx. total weight 2.5g, gold tested 18ct	£280-£380
276	Gold three stone diamond cocktail ring, approx. total weight 2.4g, gold tested 18ct	£250-£350
277	Gold, sapphire and diamond dress ring, approx. total weight 2.4g, gold tested 18ct	£180-£280
278	Gold, sapphire and diamond dress ring, approx. total weight 2.9g, gold tested 18ct	£220-£320
279	Two 9ct gold rings set with coloured stones, approx. total weight 3.7g	£80-£120
280	14ct yellow gold and blue topaz dress ring, approx. total weight 4.1g	£250-£350
281	22ct yellow gold wedding band, approx. total weight 1.6g	£120-£180
282	22ct wedding band, approx. total weight 1.8g	£100-£150
283	Platinum wedding band, approx. total weight 3.6g	£80-£120

Lot No.	Description	Estimate
284	Cartier 18ct white gold love pendant with two diamonds on a double strand chain, to include box and certificate DPR873	£1500-£2000
285	Gold and cornelian necklace, approx. total weight 20.1g, tested 9ct	£500-£800
286	Art Nouveau style 18ct white gold, rose diamonds and pink tourmaline pendant necklace, approx. total weight 10.1g	£1000-£1500
287	White and yellow gold, diamond and emerald pendant, approx. total weight 4.9g, tested 18ct	£500-£900
288	18ct yellow gold pendant/brooch set with two approx. 4ct tourmalines and a 50 point diamond, approx. total weight 13g	£1200-£1800
289	A vintage 9ct gold seed pearl and ruby brooch, approx. total weight 8.7g	£250-£350
290	Victorian 15ct yellow gold peridot and seed pearl pendant, approx. total weight 4.7g	£250-£350
291	9ct yellow gold, peridot and seed pearl brooch, approx. total weight 9.9g	£150-£200
292	18ct yellow gold Mother of Pearl and diamond pendant	£100-£150
293	14ct yellow gold and jade pendant and a pair of 14ct yellow gold and jade earrings	£180-£280
294	9ct yellow and white gold antique brooch set with seed pearls, approx. total weight 2.4g	£80-£120
295	14ct gold and diamond bar brooch, approx. total weight 2.2g	£120-£180
296	9ct gold Star of David pendant set with diamonds, approx. total weight 2.9g	£80-£120
297	A pair of yellow gold and blue topaz earrings, approx. total weight 9.1g, tested 18ct	£400-£600
298	A pair of 14ct gold earrings and a matching pendant, approx. total weight 12.7g	£600-£900
299	A pair of 9ct yellow gold rope twist earrings, approx. total weight 1.6g	£40-£60
300	Gold fancy link necklace with gold and cabochon turquoise clasp, approx. total weight 56g, tested 18ct	£3000-£5000
301	Gold popcorn mesh weave link necklace, approx. total weight 58g, tested 18ct	£3000-£5000
302	Gold rope twist necklace, approx. total weight 28g, tested 14ct	£1400-£2000

Lot No.	Description	Estimate
303	14ct yellow gold, ruby and diamond pendant necklace, approx. total weight 8.6g	£600-£900
304	Gold muff chain, approx. total weight 26.5g tested 9ct	£700-£1000
305	9ct rope twist necklace, approx. total weight 15.6g	£400-£600
306	9ct rope twist necklace, approx. total weight 15.2g	£400-£600
307	9ct yellow gold Albert chain, approx. total weight 10.7g	£300-£500
308	9ct yellow gold chain, approx. total weight 3.9g	£120-£180
309	9ct yellow gold chain with a 9ct yellow gold and pearl pendant, approx. total weight 1.7g	£60-£90
310	18ct yellow gold box link chain, approx. total weight 4.4g	£250-£350
311	9ct gold chain with a 9ct gold Star of David pendant, approx. total weight 5.6g	£150-£200
312	9ct yellow gold fine link necklace, approx. total weight 2.2g	£60-£90
313	18ct yellow gold fine link pendant necklace, approx. total weight 3.8g	£220-£320
314	9ct gold articulated brick link bracelet, approx. total weight 60.2g	£1600-£2000
315	18ct yellow gold articulated brick link bracelet, approx. total weight 33.1g	£2000-£3000
316	A Middle Eastern 21ct yellow gold and enamel bracelet, approx. total weight 18.2g	£200-£1800
317	9ct yellow gold bangle with suspensory chain, approx. total weight 27.2g	£800-£1200
318	9ct yellow gold fancy link bracelet with padlock clasp, approx. total weight 11.1g	£320-£520
319	9ct three colour gold bangle, approx. total weight 15.1g	£400-£600
320	9ct gold charm bracelet with 21 charms to include 5 gold coins, approx. total weight 99g	£2800-£3800
321	9ct gold charm bracelet with 19 charms to include 3 gold coins, approx. total weight 67g	£1800-£2800
322	A pair of 9ct gold engine turned cufflinks, in original case, approx. total weight 4.7g	£120-£180
323	A pair of 1925 gold sovereigns set in 18ct gold cufflinks, approx. total weight 27.3g	£1800-£2800
324	1914 George V gold sovereign	£600-£900
325	1927 George V gold sovereign with applied pendant loop, approx. total weight 8.1g	£600-£900

Lot No.	Description	Estimate
326	1909-1918 Turkish Ottoman Empire 50 Kurush gold coin with applied loop pendant, approx. total weight 3.6g	£280-£380
327	1861 USA \$2.5 Coronet head gold coin with drilled hole, approx. total weight 4.1g	£300-£500
328	1798 George III Third Guinea gold coin with drilled hole, approx. total weight 2.7g	£200-£300
329	1853 USA \$1 gold coin with drilled hole, approx. total weight 1.2g	£100-£150
330	1856 USA \$1 gold coin with drilled hole, approx. total weight 1.7g	£120-£180
331	1863 French 5 Franc gold coin with drilled hole, approx. total weight 1.6g	£120-£180



Lot 346

Lot No.	Description	Estimate
Silver & Silver Plate		
332	William IV hallmarked silver four piece tea and coffee service of melon fluted form, chased with flowers and leaves on shell shaped bracket feet, London 1834 by Joseph and John Angel, approx. total weight 2359g	£3000-£5000
333	A hallmarked silver salver with shell, scroll and leaf border, engraved to the centre with flowers, leaves and scrolls on three pierced leaf chased bracket feet, Sheffield 1913 by John Round, approx. total weight 1616g	£1800-£2800
334	A hallmarked silver salver with scroll border on three leaf capped volute scroll feet, Sheffield 1915 by Walker and Hall, approx. total weight 821g	£1000-£1500
335	Victorian hallmarked silver cream jug with double scroll handle on four scroll feet, London 1841, approx. total weight 275g	£300-£500
336	George II hallmarked silver card tray with engraved coat of arms on three stepped hoof feet, London 1736, approx. total weight 165g	£200-£300
337	A Chinese three piece white metal teaset, with applied dragons and bamboo fronds, simulated bamboo handles, approx. total weight 825g	£1000-£1500
338	A Chinese three piece white metal teaset, chased with dragons and bamboo fronds, simulated bamboo handles, approx. total weight 431g	£500-£800
339	A Chinese white metal tea caddy, rounded rectangular form, the sides chased with Chinese characters and domed pull off cover, approx. total weight 187g	£200-£300
340	A Chinese white metal rectangular jardiniere, pierced and chased with prunus blossom and dragons on four simulated bamboo legs and cast dragon side handles all on carved and pierced rectangular hardwood stand, to include detachable copper liner, 16 x 22 x 11.5cm, A/F	£300-£500
341	A pair of Chinese white metal cups and saucers engraved with prunus blossom and bamboo, signed to the bases and a liquid measure decorated with applied dragons, A/F	£150-£200
342	An Aztec style Mexican white metal plate decorated with masks and geometric forms, stamped 925, approx. total weight 304g	£320-£520

Lot No.	Description	Estimate
343	A hallmarked silver Art Nouveau three handled vase on raised circular base, Chester 1904, approx. total weight 349g	£400-£600
344	Mappin and Webb hallmarked silver and enamel oval powder box, plain sides and hinged cover, approx. total weight 65g, 5 x 7.5 x 2.5cm	£120-£180
345	A hallmarked silver trophy cup with scroll side handles on raised square base, London 1928, approx. total weight 654g	£700-£1000
346	A hallmarked silver sugar shaker in the form of a Scottish Mull with pierced screw off cover, in original fitted case, marks rubbed, approx. weight of silver 309g	£350-£550
347	A quantity of hallmarked silver and white metal to include a bonbon dish, a Kiddush cup and a bowl in the form of an apple	£400-£600
348	Two hallmarked silver dressing table glass containers with silver covers and two white metal trinket boxes chased with figures, flowers, leaves and scrolls (4)	£150-£200
349	A quantity of hallmarked silver to include two Christening cups, two bonbon dishes and a vase, approx. weight of weighable silver 324g	£300-£500
350	A hallmarked silver rectangular engine turned cigarette box with cedarwood lining, Birmingham 1946	£80-£120
351	A hallmarked silver rectangular casket with felt lining, marks rubbed, 6.5 x 13.5 x 9.5cm	£100-£150
352	A hallmarked silver cigarette box with cedarwood lining and a hallmarked silver candle snuffer	£120-£180



Lot 344

Lot No.	Description	Estimate
353	Two rectangular jewellery caskets with applied hallmarked silver plaques, each 5.5 x 17 x 13cm	£80-£120
354	A hallmarked silver engine turned cigarette case, approx. total weight 144.5g	£150-£200
355	A pair of hallmarked silver Queens pattern grape scissors, circa 1870, approx. total weight 115g	£120-£180
356	A pair of hallmarked silver grape scissors, Sheffield 1959, approx. total weight 106g	£120-£180
357	Danish white metal letter opener with crown finial, a matching bottle opener and an Elizabeth II \$5 1990 Canadian fine silver 1 oz coin	£60-£90
358	A cased set of six gold and Mother of Pearl button and two hallmarked silver and Mother of Pearl fruit knives	£80-£120
359	Five hallmarked silver napkin rings, approx. total weight 147g	£160-£200
360	A cased hallmarked silver Christening pusher and spoon, approx. total weight of silver 38g	£40-£60
361	Nine Danish silver dessert spoons and ten dessert forks, approx. total weight 839g	£800-£1200
362	Ten Danish silver tablespoons, approx. total weight 408g	£400-£600
363	Fourteen Danish white metal table forks, approx. total weight 628g	£300-£500
364	Victorian cased set of hallmarked bright cut engraved silver coffee spoons, London 1892, approx. total weight 53g	£50-£80
365	A cased set of hallmarked silver coffee spoons, Sheffield 1932, approx. total weight 74g	£80-£120
366	Four hallmarked silver wine labels with suspensory chains, approx. total weight 63g	£70-£100
367	A quantity of hallmarked silver novelty pieces and a dressing table bottle cover (5)	£50-£80
368	A hallmarked silver and enamel six piece dressing table set to include a hand mirror, a pair of clothes dressing, a pair of hair brushes and a comb (mirror A/F)	£120-£180
369	A hallmarked silver three piece dressing table set A/F	£60-£90
370	A hallmarked silver three piece dressing table set to include a hand mirror, hair brush and a clothes brush	£70-£100
371	Two hallmarked silver rectangular photograph frames, image size 25 x 20cm	£60-£90

Lot No.	Description	Estimate
372	Three hallmarked silver rectangular photograph frames, image size 18 x 13cm	£80-£120
373	Three hallmarked silver rectangular photograph frames in original packaging, image size 10 x 15cm	£60-£90
374	Three hallmarked silver rectangular photograph frames, a. 32 x17 b. 21.5 x 16.5 c. 18x 14cm	£100-£150
375	Three hallmarked silver rectangular photograph frames (one A/F) a. 19 x15.5 b. 16 x 22cm c. 22 x 17cm	£60-£90
376	A silver plated punch bowl with eight cups and a ladle, 18.5 x 32.5cm	£80-£120
377	Three Vera Wang Wedgwood silver plated boxed napkin rings, four per box all as new	£60-£90
378	A canteen of silver plated flatware and a cased set of silver plated dessert eaters	£70-£100
379	A cased set of Villeroy and Boch flatware for six place settings in original fitted case	£80-£120
380	A quantity of oriental white metal spoons and knife stands (18)	£80-£120
381	Elkington and Co. cased set of silver plated dessert eaters for twelve place settings	£40-£60
382	Mappin and Webb silver plated flatware to include knives, forks, spoons, soup spoons, fish eaters and pastry forks	£150-£200
383	Mappin and Webb silver plated flatware to include knives, forks, spoons and dessert eaters with Mother of Pearl handles	£70-£100
384	A quantity of Kings pattern silver plated flatware to include knives, forks, spoons, soup spoons and dessert eaters	£120-£180
385	A quantity of silver plated flatware to include knives, forks, spoons and soup spoons	£60-£90
386	A quantity of silver plate to include candelabra, dishes, a teapot kettle on stand, a goblet, a Menorah, trinket boxes, coasters and a butter dish	£120-£180
387	A quantity of silver plate to include a teaset, trays, cake stand and tea kettle on stand	£70-£100
388	A quantity of silver plate to include a teaset, trays, entrée dish and cover	£70-£100
389	A quantity of silver plate to include a set of four Elkington and Co. Corinthian column candlesticks, a Georgian two handled cup, an Elkington and Co. pint mug, a white metal coaster and an Old Sheffield plate wine funnel	£150-£200

Notes

We are pleased to offer online bidding via
www.easyliveauction.com and www.the-saleroom.com
The live auction will allow you watch the sale as it happens
in real time and listen to the auctioneer via a live audio feed.

To view the catalogue and register for the sale please logon to
www.the-saleroom.com/busheyauctions
or www.easyliveauction.com/busheyauctions
Please note our online bidding terms and conditions

In addition to this service we offer
absentee/commission and telephone bids
Please contact Richard or Linda for further information
020 8386 2552 or 07504 201202



the-saleroom.com

Valuation Days

Friday 19th and 26th June
9am to 5pm at our Watford showroom
Unit 9 Shakespeare Industrial Estate
Watford
WD24 5RR

**Please call or email to book an appointment
or a home visit on any other day
NOW ACCEPTING ENTRIES**

tel: 020 8386 2552
mobile: 07504 201202
e-mail: enquiries@busheyauctions.com

Next Auction Date

Timed On-line Auction
25th July ending 2nd August 2026
bidding on the-saleroom.com/busheyauctions

Fine Art, Antiques, Collectables,
Jewellery and Silver

**Please check the website for confirmation
and viewing times
www.busheyauctions.com**



Lot 251

BUSHEY Auctions

tel: 0208 386 2552

mobile: 07504 201202

email: enquiries@busheyauctions.com

visit our website

www.busheyauctions.com